

# ÉCOLE JOE CLARK SCHOOL

Believe in yourself,  
découvrez le LEADER en vous!



STUDENT / PARENT AGENDA 2021—2022

Right Honourable École Joe Clark School  
École Le Très Honorable Joe Clark



**Parent / Student Handbook  
2021 - 2022**

Principal – Mrs. Sarah Clark

E-mail : [clarks@fsd38.ab.ca](mailto:clarks@fsd38.ab.ca)  
Phone: 403-652-2020 ext 15123

Vice-Principal – Mrs. Christy Crowe

E-mail: [crowec@fsd38.ab.ca](mailto:crowec@fsd38.ab.ca)  
Phone: 403-652-2020 ext 15125

<p>Foothills School Division's Website <a href="http://www.fsd38.ab.ca">http://www.fsd38.ab.ca</a></p>	<p>École Joe Clark School's Website <a href="http://joelclark.fsd38.ab.ca">http://joelclark.fsd38.ab.ca</a> <i>Bookmark our website to keep up to date on what's happening in our school!</i></p>
--	---

**École Joe Clark School  
1208 9<sup>th</sup> Avenue SE  
High River, Alberta  
T1V 1L2**

**School Telephone: 403-652-2020**

School Fax: 403-652-1358



Find us on Twitter: @EJoeClarkSchool



Instagram: joelclarkschool



Facebook: École Joe Clark School – Parent Council

**Phone in For Safety!**

**When your child will be late or absent from school, please  
call the school absence line at**

**403-652-2020  
extension 1**



# WELCOME TO ÉCOLE JOE CLARK SCHOOL!

We believe that communication is an integral part of creating and maintaining a great sense of community, as well as developing a healthy educational partnership. We welcome the chance to discuss any questions that you may have regarding your child's school program, progress, or our school procedures.

At École Joe Clark School, we have a highly qualified and committed staff who works diligently to provide the best possible learning environment for our children. With your help as **partners in education**, we will be successful in providing an excellent learning environment for your child's academic, physical, social and emotional growth.

At École Joe Clark School, we promote Leadership in all students. As such, students are encouraged to become involved in Leadership Teams throughout the school. Our school mission '**Believe in Yourself, Découvrez le Leader en Vous**' emphasizes that all students are leaders and are encouraged to contribute to our school community.



## FSD SCHOOL CALENDAR 2021-22:

2021 - 2022 Calendar (Approved by the Board on January 13, 2021)

	M	T	W	T	F	Student Contact Days	Staff Days
August	2 9 16 23 30	3 10 17 24 31	4 11 18 25	5 12 19 26	6 13 20 27	0	2
September	6 13 20 27	7 14 21 28	8 15 22 29	1 2 9 16 23 30	3 10 17	20	21
October	4 11 18 25	5 12 19 26	6 13 20 27	7 14 21 28	1 8 15 22 29	18	20
November	1 8 15 22 29	2 9 16 23 30	3 10 17 24	4 11 18 25	5 12 19 26	20	21
December	6 13 20 27	7 14 21 28	8 15 22 29	9 16 23 30	10 17 24 31	11.5	13
January	3 10 17 24 31	4 11 18 25	5 12 19 26	6 13 20 27	7 14 21 28	20/21	21
Semester 1						89.5/90.5	98
February	7 14 21 28	8 15 22	9 16 23	10 17 24	11 18 25	15	17
March	7 14 21 28	8 15 22 29	9 16 23 30	10 17 24 31	11 18	22	23
April	4 11 18 25	5 12 19 26	6 13 20 27	7 14 21 28	1 8 15	14.5	15
May	2 9 16 23 30	3 10 17 24	4 11 18 25	5 12 19 26	6 13 20 27	20	21
June	6 13 20 27	7 14 21 28	8 15 22 29	9 16 23	10 17 24	18.5 / 19.5	21
Semester 2						90/91	97
TOTAL						179.5/181.5	195

1<sup>ST</sup> Day of School – September 1, 2021

0.5 for students – Refer to AP130. Possible 0.5 Ops. Day for staff dependent on assigned time.
Statutory Day
Christmas/Easter Break
Professional Learning Day
Operations Day
FAA Professional Learning Day

Certificated School Based Support Staff Professional Learning Day
Schools closed. No staff or students at school
Elem/Jr. School PD
Teachers' Convention

# KINDERGARTEN SCHOOL CALENDAR 2021-22:

**2021 - 2022 Calendar** (Approved by the Board on January 13, 2021)

	M							T							W							T							F							M/W Days	T/Th Days																										
	M	T	W	T	F	S	S	M	T	W	T	F	S	S	M	T	W	T	F	S	S	M	T	W	T	F	S	S	M	T	W	T	F	S	S			M	T	W	T	F	S	S																			
August	2	3	4	5	6			9	10	11	12	13			16	17	18	19	20			23	24	25	26	27			30	31																				0	0						0						
September	6	7	8	9	10			13	14	15	16	17			20	21	22	23	24			27	28	29	30																									10	10						10						
October	4	5	6	7	8			11	12	13	14	15			18	19	20	21	22			25	26	27	28	29																								9	9						9						
November	1	2	3	4	5			8	9	10	11	12			15	16	17	18	19			22	23	24	25	26			29	30																				10	10						10						
December	6	7	8	9	10			13	14	15	16	17			20	21	22	23	24			27	28	29	30	31																								5.5	6						5.5						
January	3	4	5	6	7			10	11	12	13	14			17	18	19	20	21			24	25	26	27	28			31																					10	10						10						
Semester 1																													44.5	45																																	
Semester 2																													45	45																																	
TOTAL																													89.5	90																																	

1<sup>ST</sup> Day of School – September 1, 2021

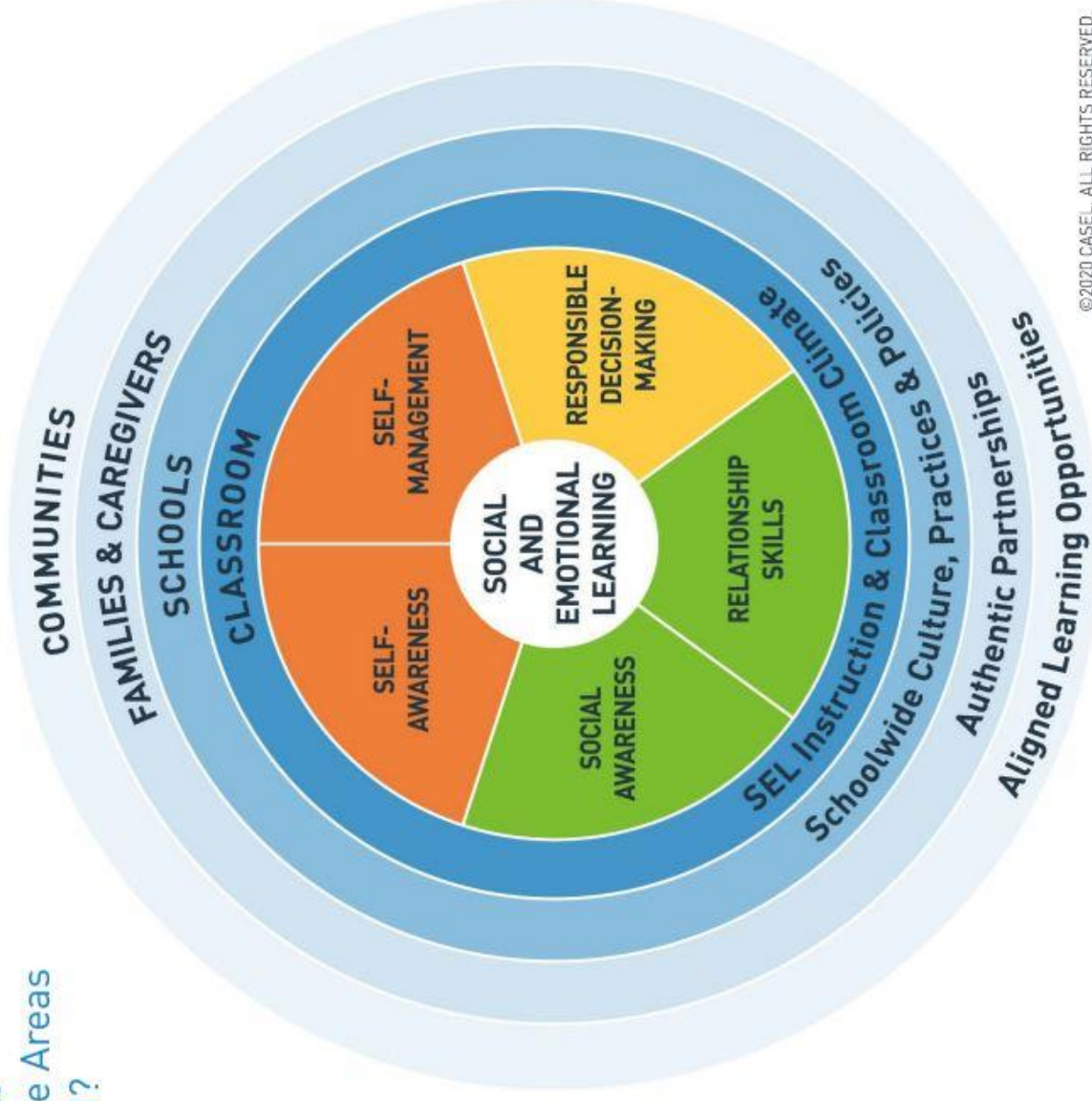
0.5 for students – Refer to AP130. Possible 0.5 Ops. Day for staff dependent on assigned time.	Statutory Day	Christmas/Easter Break	Professional Learning Day	Operations Day	FAA Professional Learning Day
Certificated School Based Support Staff Professional Learning Day	Schools closed.	No staff or students at school			Elem/Jr. School PD
					Teachers' Convention

## CASEL'S SEL FRAMEWORK:

What Are the Core Competence Areas and Where Are They Promoted?

**Social and emotional learning (SEL) is an integral part of education and human development.** SEL is the process through which all young people and adults acquire and apply the knowledge, skills, and attitudes to develop healthy identities, manage emotions and achieve personal and collective goals, feel and show empathy for others, establish and maintain supportive relationships, and make responsible and caring decisions.

SEL advances educational equity and excellence through authentic school-family-community partnerships to establish learning environments and experiences that feature trusting and collaborative relationships, rigorous and meaningful curriculum and instruction, and ongoing evaluation. SEL can help address various forms of inequity and empower young people and adults to co-create thriving schools and contribute to safe, healthy, and just communities.



©2020 CASEL. ALL RIGHTS RESERVED.



Learn more: [www.casel.org/what-is-SEL](http://www.casel.org/what-is-SEL)