

ÉCOLE JOE CLARK SCHOOL

Believe in yourself,
découvrez le LEADER en vous!



STUDENT / PARENT AGENDA 2022—2023

Right Honourable École Joe Clark School
École Le Très Honorable Joe Clark



**Parent / Student Handbook
2022 - 2023**

Principal – Mrs. Sarah Clark

E-mail : clarks@fsd38.ab.ca
Phone: 403-652-2020 ext 15123

Vice-Principal – Mr. Scott Flintoft

E-mail: flintofts@fsd38.ab.ca
Phone: 403-652-2020 ext 15125

<p>Foothills School Division's Website http://www.fsd38.ab.ca</p>	<p>École Joe Clark School's Website http://joelclark.fsd38.ab.ca <i>Bookmark our website to keep up to date on what's happening in our school!</i></p>
--	---

**École Joe Clark School
1208 9th Avenue SE
High River, Alberta
T1V 1L2**

School Telephone: 403-652-2020

School Fax: 403-652-1358



Find us on Twitter: @EJoeClarkSchool



Instagram: joelclarkschool



Facebook: École Joe Clark School – Parent Council

Phone in For Safety!

**When your child will be late or absent from school, please
call the school absence line at**

**403-652-2020
extension 1**



WELCOME TO ÉCOLE JOE CLARK SCHOOL!

We believe that communication is an integral part of creating and maintaining a great sense of community, as well as developing a healthy educational partnership. We welcome the chance to discuss any questions that you may have regarding your child's school program, progress, or our school procedures.

At École Joe Clark School, we have a highly qualified and committed staff who works diligently to provide the best possible learning environment for our children. With your help as **partners in education**, we will be successful in providing an excellent learning environment for your child's academic, physical, social and emotional growth.

At École Joe Clark School, we promote Leadership in all students. As such, students are encouraged to become involved in Leadership Teams throughout the school. Our school mission '**Believe in Yourself, Découvrez le Leader en Vous**' emphasizes that all students are leaders and are encouraged to contribute to our school community.

EJCS Bell TIMES 2022-23

Start Time	8:45am
Morning Recess	10:30am – 10:50am
Morning End Time	12:00pm
Afternoon Start Time	12:40pm
Dismissal	3:15pm

FSD SCHOOL CALENDAR 2022-23:

2022 - 2023 Calendar (Approved by the Board May 25, 2022)

	M	T	W	T	F	Student Contact Days	Staff Days
August	1	2	3	4	5	0	1
	8	9	10	11	12		
	15	16	17	18	19		
	22	23	24	25	26		
	29	30	31				
September	5	6	7	8	9	17	20
	12	13	14	15	16		
	19	20	21	22	23		
	26	27	28	29	30		
October	3	4	5	6	7	19	20
	10	11	12	13	14		
	17	18	19	20	21		
	24	25	26	27	28		
	31						
November	7	8	9	10	11	20	21
	14	15	16	17	18		
	21	22	23	24	25		
	28	29	30				
December	5	6	7	8	9	16.5	17
	12	13	14	15	16		
	19	20	21	22	23		
	26	27	28	29	30		
January	2	3	4	5	6	16/17	17
	9	10	11	12	13		
	16	17	18	19	20		
	23	24	25	26	27		
	30	31					
Semester 1						88.5/89.5	96
February	6	7	8	9	10	15	17
	13	14	15	16	17		
	20	21	22	23	24		
	27	28					
March	6	7	8	9	10	22	23
	13	14	15	16	17		
	20	21	22	23	24		
	27	28	29	30	31		
April	3	4	5	6	7	9	10
	10	11	12	13	14		
	17	18	19	20	21		
	24	25	26	27	28		
May	1	2	3	4	5	21	22
	8	9	10	11	12		
	15	16	17	18	19		
	22	23	24	25	26		
	29	30	31				
June	5	6	7	8	9	20.5 / 21.5	22
	12	13	14	15	16		
	19	20	21	22	23		
	26	27	28	29	30		
Semester 2						87.5/88.5	94
TOTAL						176/178	190

0.5 for students – Refer to API30. Possible 0.5 Op. Day for staff dependent on assignment time.	FAA Professional Learning Day
Statutory Day	Schools Closed. No staff or students at school.
Christmas / Easter Break	Elem / Jr School PD
Local Professional Learning Day	Teachers' Convention
Division Learning Day	Opening / Operations Day
Local Professional Learning Day including Support Staff	

1st Day of School – September 6, 2022

FSD KINDERGARTEN SCHOOL CALENDAR 2022-23:

2022-2023 Calendar – Kindergarten Attendance Days (updated June 2022)

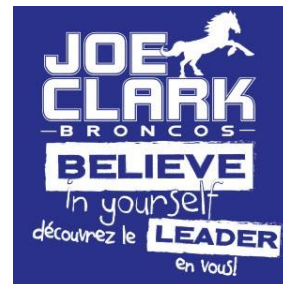
	M	T	W	T	F	M/W Days	T/Th Days
August	1 8 15 22 29	2 9 16 23 30	3 10 17 24 31	4 11 18 25	5 12 19 26	0	0
September	5 12 19 26	6 13 20 27	7 14 21 28	1 8 15 22 29	2 9 16 23 30	8	9
October	10 17 24 31	11 18 25	12 19 26	13 20 27	14 21 28	9	10
November	7 14 21 28	1 8 15 22 29	2 9 16 23 30	3 10 17 24	4 11 18 25	11	9
December	5 12 19 26	6 13 20 27	7 14 21 28	1 8 15 22 29	2 9 16 23 30	8.5	8
January	2 9 16 23 30	3 10 17 24 31	4 11 18 25	5 12 19 26 27	6 13 20	8	8
Semester 1						44.5	44
February	6 13 20 27	7 14 21 28	1 8 15 22	2 9 16 23 24	3 10 17	8	7
March	6 13 20 27	7 14 21 28	1 8 15 22 29	2 9 16 23 30	3 10 17	11	11
April	10 17 24	11 18 25	12 19 26	13 20 27	14 21 28	4	5
May	15 22 29	1 8 15 22 29	2 9 16 23 30	3 10 17 24	4 11 18 25 26	11	10
June	5 12 19 26	6 13 20 27	7 14 21 28	1 8 15 22 29	2 9 16 23 30	9.5	11
Semester 2						43.5	44
TOTAL						88	88

1st Day of School – September 6, 2022

Monday/Wednesday Class
Tuesday/Thursday Class

0.5 for students – Refer to API30. Possible 0.5 Ops. Day for staff dependent on assignment time.
Statutory Day
Christmas / Easter Break
Local Professional Learning Day
Division Learning Day
Local Professional Learning Day including Support Staff

FAA Professional Learning Day
Schools Closed. No staff or students at school.
Elem / Jr School PD
Teachers/ Convention
Opening / Operations Day

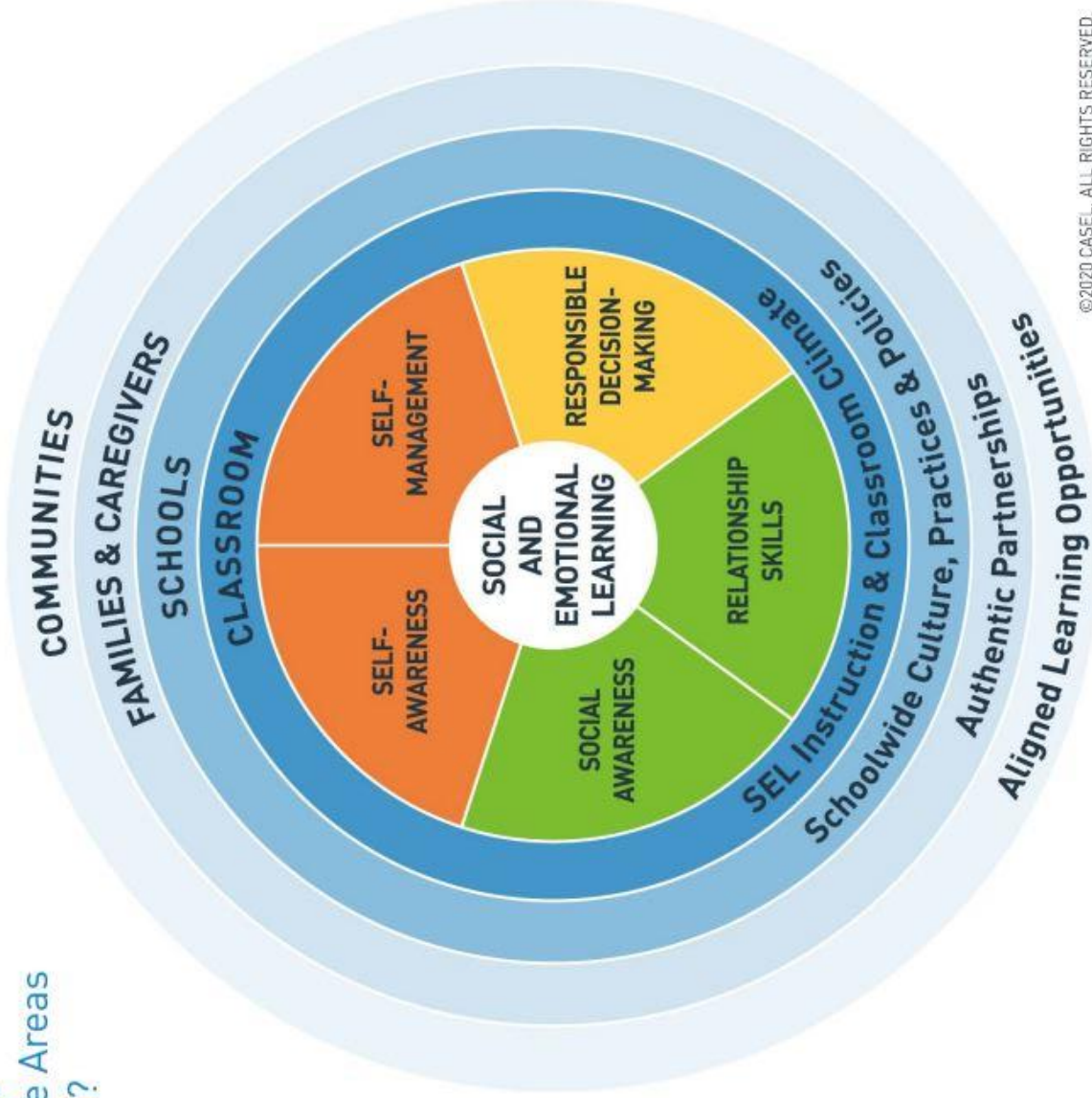


CASEL'S SEL FRAMEWORK:

What Are the Core Competence Areas and Where Are They Promoted?

Social and emotional learning (SEL) is an integral part of education and human development. SEL is the process through which all young people and adults acquire and apply the knowledge, skills, and attitudes to develop healthy identities, manage emotions and achieve personal and collective goals, feel and show empathy for others, establish and maintain supportive relationships, and make responsible and caring decisions.

SEL advances educational equity and excellence through authentic school-family-community partnerships to establish learning environments and experiences that feature trusting and collaborative relationships, rigorous and meaningful curriculum and instruction, and ongoing evaluation. SEL can help address various forms of inequity and empower young people and adults to co-create thriving schools and contribute to safe, healthy, and just communities.



©2020 CASEL. ALL RIGHTS RESERVED.



Learn more: www.casel.org/what-is-SEL